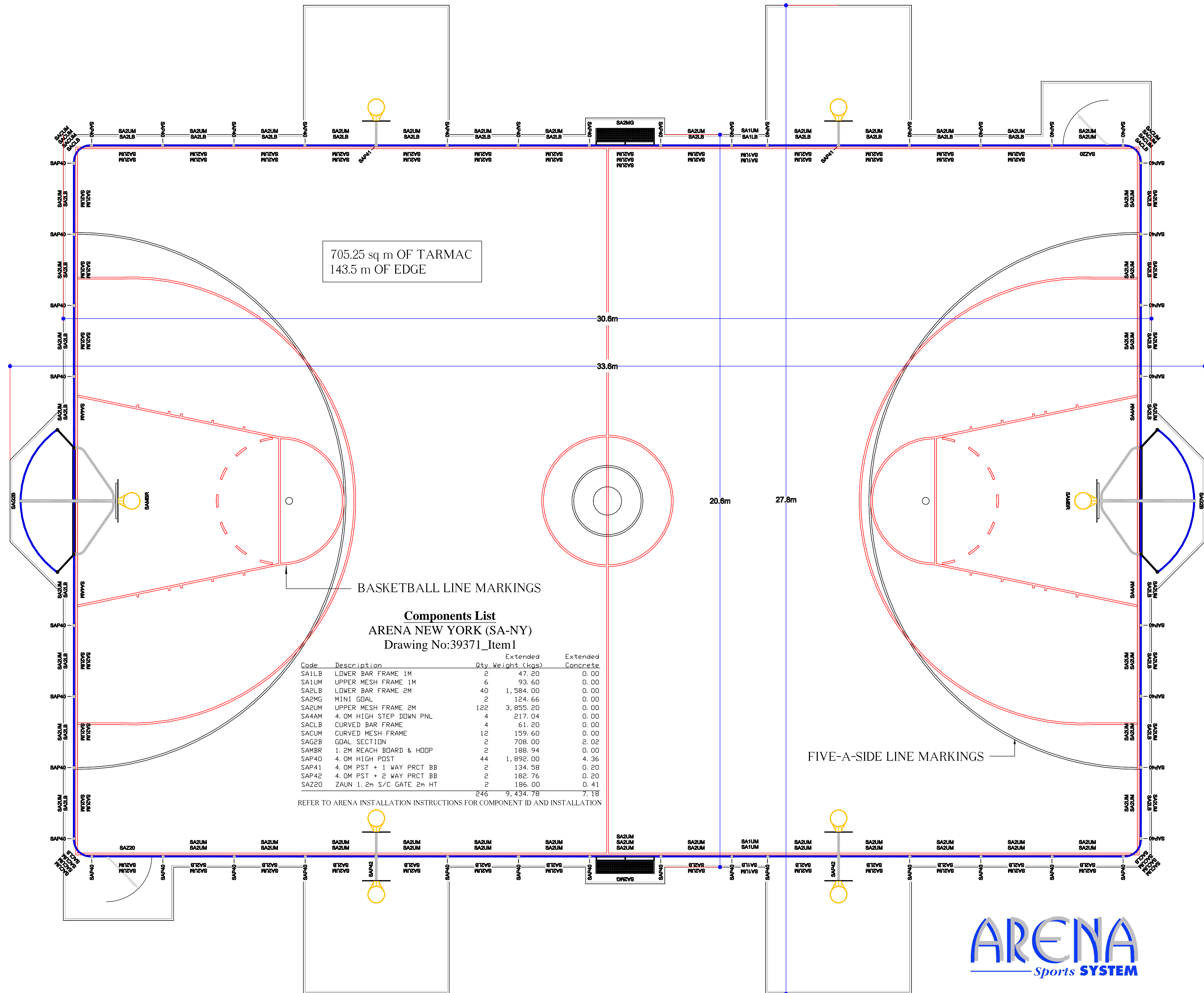


NOTES  
 DIMENSIONS SHOWN FOR TARMAC ARE TAKEN FROM THE OUTSIDE OF THE PRE-CAST CONCRETE EDGE. DIMENSIONS SHOWN FOR EQUIPMENT ARE TAKEN FROM THE OUTERMOST FACE.



705.25 sq m OF TARMAC  
 143.5 m OF EDGE

BASKETBALL LINE MARKINGS

FIVE-A-SIDE LINE MARKINGS

**Components List**  
 ARENA NEW YORK (SA-NY)  
 Drawing No:39371\_Item1

Code	Description	Qty	Weight (kgs)	Extended Concrete
SA1LB	LOWER BAR FRAME 1M	2	47.20	0.00
SA1UM	UPPER MESH FRAME 1M	6	93.60	0.00
SA2LB	LOWER BAR FRAME 2M	40	1,584.00	0.00
SA2MG	MINI GOAL	2	124.66	0.00
SA2UM	UPPER MESH FRAME 2M	122	3,855.20	0.00
SA4AM	4.0M HIGH STEP DOWN PNL	4	217.04	0.00
SACL	CURVED BAR FRAME	4	61.20	0.00
SACUM	CURVED MESH FRAME	12	159.60	0.00
SAG2B	GOAL SECTION	2	708.00	2.02
SAMBR	1.2M REACH BOARD & HOOP	2	188.94	0.00
SAP40	4.0M HIGH POST	44	1,892.00	4.36
SAP41	4.0M PST + 1 WAY PRCT BB	2	134.58	0.20
SAP42	4.0M PST + 2 WAY PRCT BB	2	182.76	0.20
SAZ20	ZAUN 1.2m S/C GATE 2m HT	2	186.00	0.41
		246	9,434.78	7.18

REFER TO ARENA INSTALLATION INSTRUCTIONS FOR COMPONENT ID AND INSTALLATION

**REVISION**

26/09/07 - Original	ISSUE A
04/06/10 - Amendment by J.F. Check by N.B. Border adjusted for international use.	ISSUE B

CUSTOMER

PROJECT

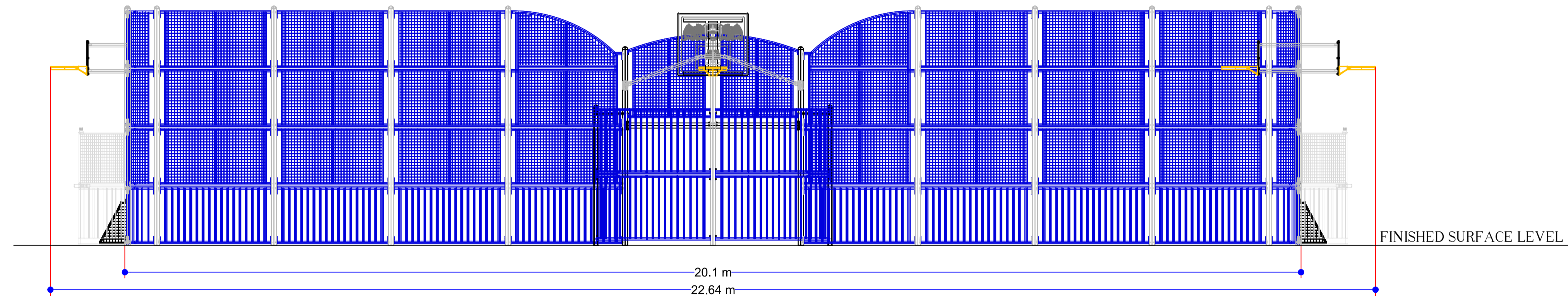
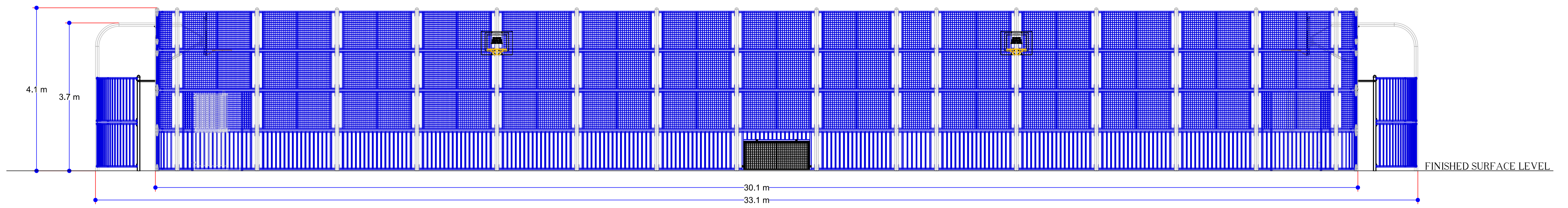
TITLE  
 ARENA SPORTS SYSTEM  
 NEW YORK SA-NY 30m x 20m

DATE 26/09/07 SCALE 1:50 @ A1  
 DRAWN BY : N.B. CHECKED BY : J.C.

DRAWING No. 39371 ISSUE B

SHEET 1 OF 2





**ARENA**  
Sports **SYSTEM**

NOTES

CUSTOMER

PROJECT

TITLE

ARENA SPORTS SYSTEM  
NEW YORK SA-NY 30m x 20m

DATE 26/09/07 SCALE 1:50 @ A1

DRAWN BY : N.B. CHECKED BY : J.C.

DRAWING No. 39371 ISSUE **B**

SHEET **2** OF **2**