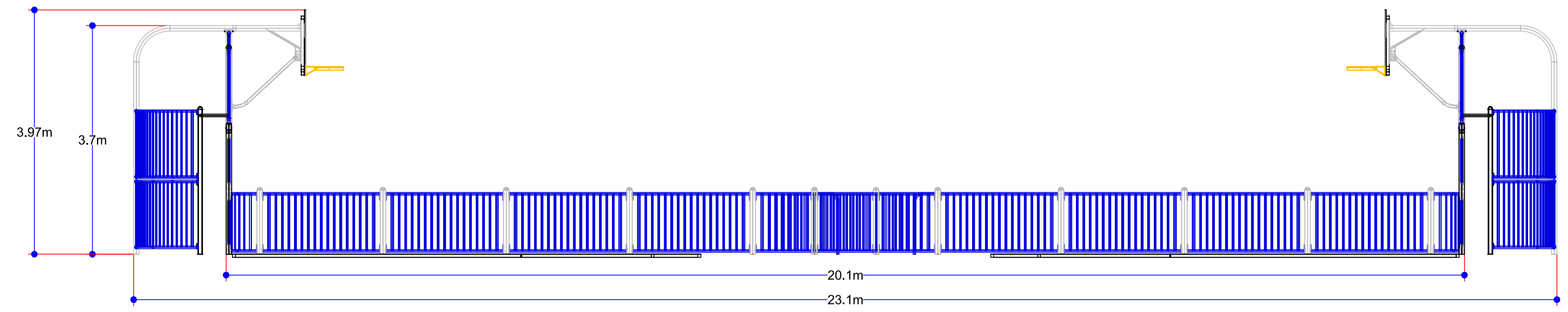
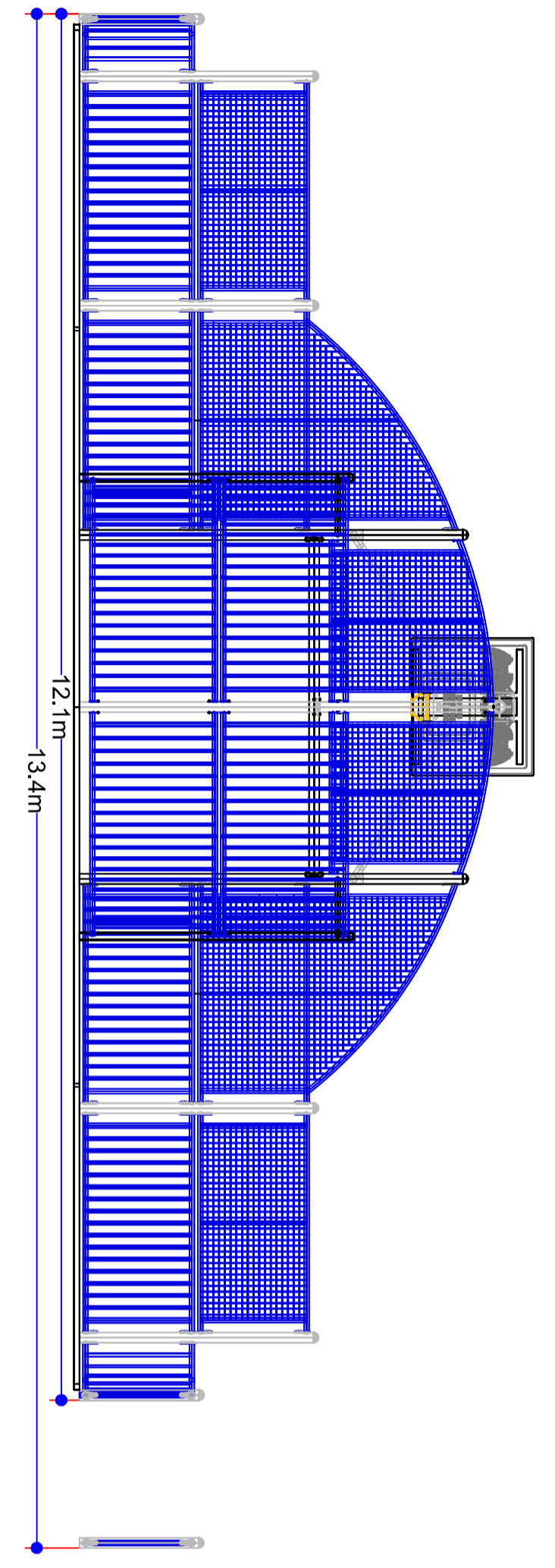
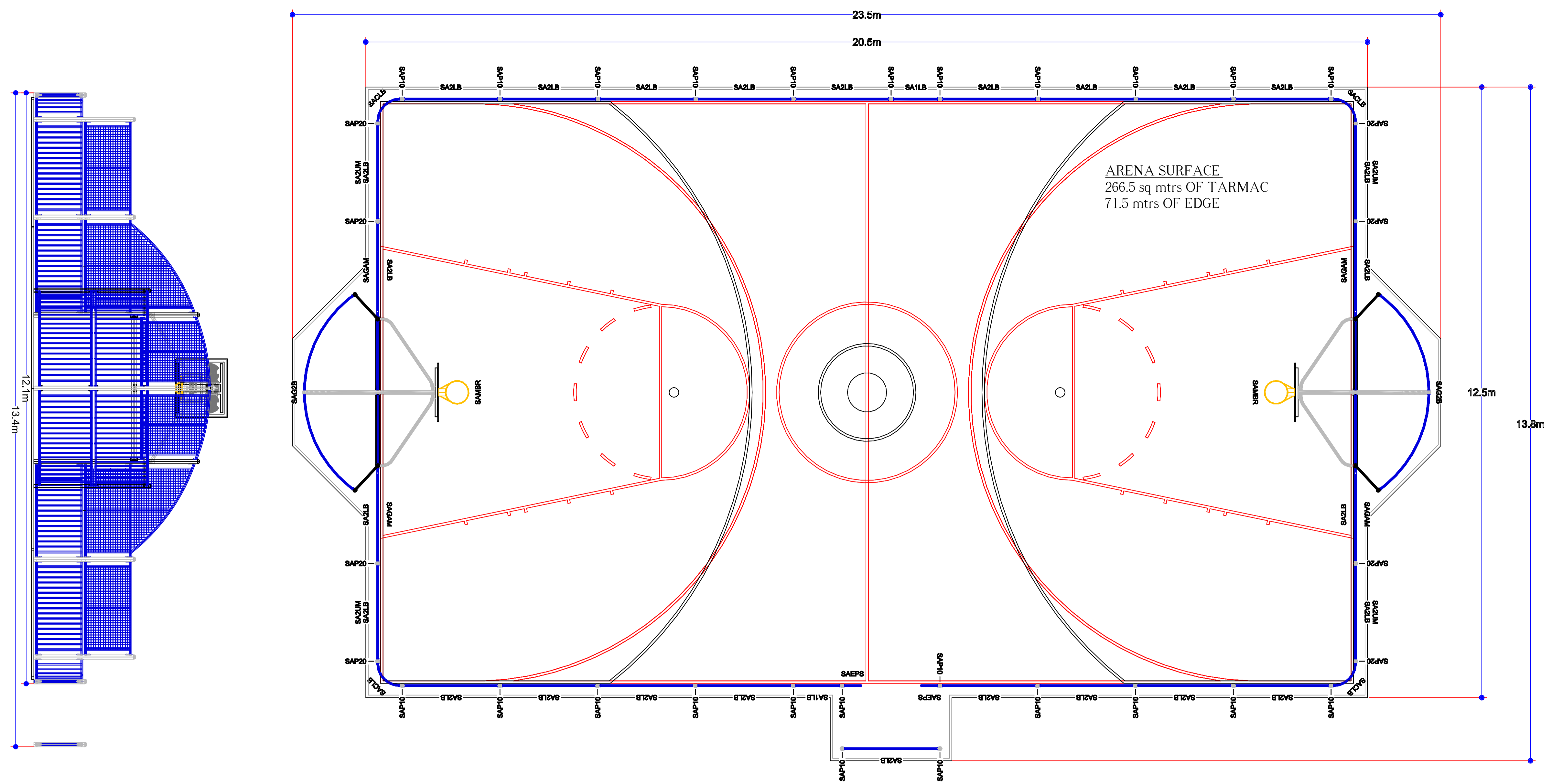


NOTES

DIMENSIONS SHOWN FOR TARMAC ARE TAKEN FROM THE OUTSIDE OF THE PRE-CAST CONCRETE EDGE. DIMENSIONS SHOWN FOR EQUIPMENT ARE TAKEN FROM THE OUTERMOST FACE.



REVISION

22/10/04	ORIGINAL	A
21/01/05	AMENDMENTS BY S.M. CHK J.C. Ground markings updated.	B
04/06/10	AMENDMENT by J.F. chk N.B. (ISSUE B) Border amended for international use.	

CUSTOMER

PROJECT

TITLE
ARENA SPORTS SYSTEM
MICHIGAN SA-MC 20m x 12m

DATE 22/10/04 SCALE 1:50
DRAWN BY : D.W. CHECKED BY : J.C.

DRAWING No. 33815 ISSUE B

SHEET 1 OF 2

Components List
MICHIGAN
Drawing No:33815_Item7

Code	Description	Qty	Extended Weight (kgs)	Extended Concrete
SA1LB	LOWER BAR FRAME 1M	2	47.20	0.00
SA2LB	LOWER BAR FRAME 2M	26	1,029.60	0.00
SA2UM	UPPER MESH FRAME 2M	4	126.40	0.00
SACLB	CURVED BAR FRAME	4	61.20	0.00
SAEPS	ACCESS SIDE PANEL - S HT	2	26.40	1.12
SAG2B	GOAL SECTION	2	708.00	2.02
SAGAM	ARCH SIDE PANEL- MESH	4	188.80	0.00
SAMBR	1.2M REACH BOARD & HOOP	2	188.94	0.00
SAP10	1.0M HIGH POST	24	360.00	1.20
SAP20	2.0M HIGH POST	8	168.00	0.50
		78	2,904.54	4.84

REFER TO ARENA INSTALLATION INSTRUCTIONS FOR COMPONENTS AND INSTALLATION





ARENA
Sports **SYSTEM**

NOTES

REVISION

CUSTOMER

PROJECT

TITLE
ARENA SPORTS SYSTEM
MICHIGAN SA-MC 20m x 12m

DATE 04/06/10 SCALE 1:50
DRAWN BY : D.W. CHECKED BY : J.C.

DRAWING No. 33815 ISSUE C

SHEET 2 OF 2