

Components List
Arena Detroit (SA-DT)
Drawing No:39565A_Item2

Code	Description	Qty	Extended Weight (kgs)	Extended Concrete
SA1LB	LOWER BAR FRAME 1M	2	47.20	0.00
SA1UM	UPPER MESH FRAME 1M	2	31.20	0.00
SA2LB	LOWER BAR FRAME 2M	37	1,465.20	0.00
SA2LS	SEAT <LEAN BACK>	4	140.00	1.06
SA2UM	UPPER MESH FRAME 2M	33	1,042.80	0.00
SAC20	2.0M HIGH CORNER POST	4	84.00	0.25
SAG2B	GOAL SECTION	1	354.00	1.01
SAG2BB	GOAL + REVERSE PRCT BB	1	404.54	1.01
SAGAM	ARCH SIDE PANEL- MESH	4	188.80	0.00
SAMBR	1.2M REACH BOARD & HOOP	2	188.94	0.00
SAP20	2.0M HIGH POST	34	714.00	2.14
SAZ20	ZAUN 1.2m S/C GATE 2m HT	1	93.00	0.20
		125	4,753.68	5.67

REFER TO ARENA INSTALLATION INSTRUCTIONS FOR COMPONENT I.D. AND INSTALLATION



NOTES

DIMENSIONS SHOWN FOR TARMAC ARE TAKEN FROM THE OUTSIDE OF THE PRE-CAST CONCRETE EDGE. DIMENSIONS SHOWN FOR EQUIPMENT ARE TAKEN FROM THE OUTERMOST FACE.

CUSTOMER

PROJECT

TITLE
 ARENA SPORTS SYSTEM
 DETROIT (SA-DT)

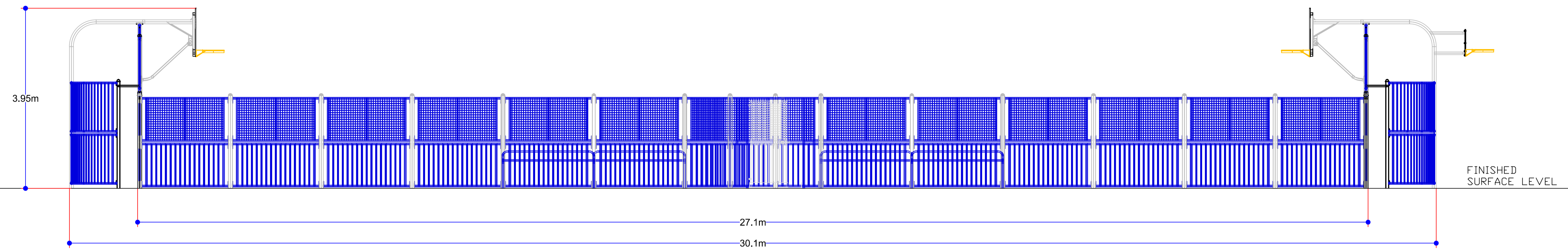
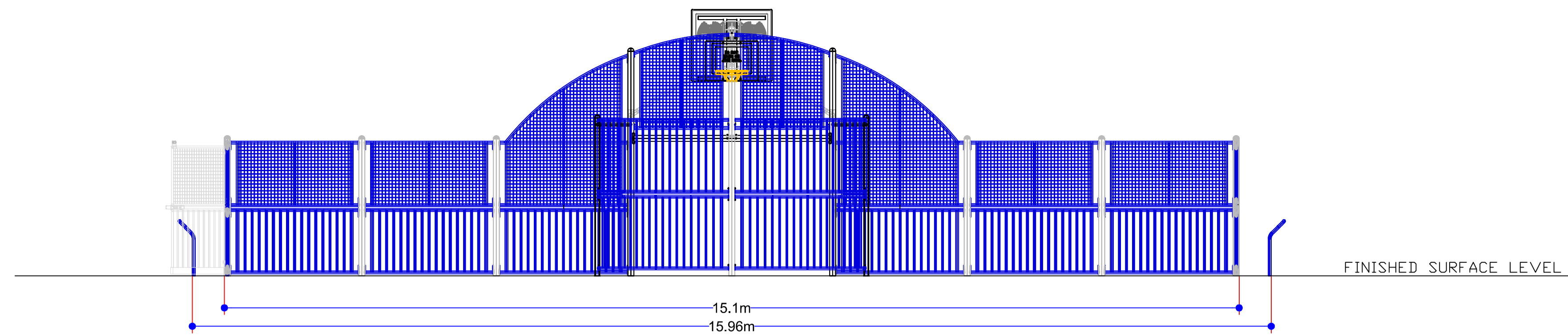
REVISIONS

05/10/07 - Original ISSUE A
 04/06/10 - Amendment by J.F. Check by N.B. Border amended for international use. ISSUE B

DATE 05/10/07 SCALE 1:50@A1
 DRAWN BY : J.A. CHECKED BY : J.C.

DRAWING No. 39565 ISSUE B
 SHEET 1 OF 2

© PLAYPOWER INC. 2010



NOTES
 DIMENSIONS SHOWN FOR TARMAc ARE TAKEN FROM THE OUTSIDE OF THE PRE-CAST CONCRETE EDGE. DIMENSIONS SHOWN FOR EQUIPMENT ARE TAKEN FROM THE OUTERMOST FACE.

REVISION

CUSTOMER

PROJECT

TITLE
**ARENA SPORTS SYSTEM
 DETROIT (SA-DT)**

DATE	05/10/07	SCALE	1:50@A1
DRAWN BY :	J.A.	CHECKED BY :	J.C.

DRAWING No. 39565 ISSUE **B**

© PLAYPOWER INC. 2010 SHEET **2** OF **2**