

DIMENSIONS SHOWN FOR TARMAc ARE TAKEN FROM THE OUTSIDE OF THE PRE-CAST CONCRETE EDGE. DIMENSIONS SHOWN FOR EQUIPMENT ARE TAKEN FROM THE OUTERMOST FACE.



REVISION

04/10/07 - Original	ISSUE A
04/06/10 AMENDMENT by J.F. ch. N.B. Border amended for international use.	ISSUE B

CUSTOMER

PROJECT

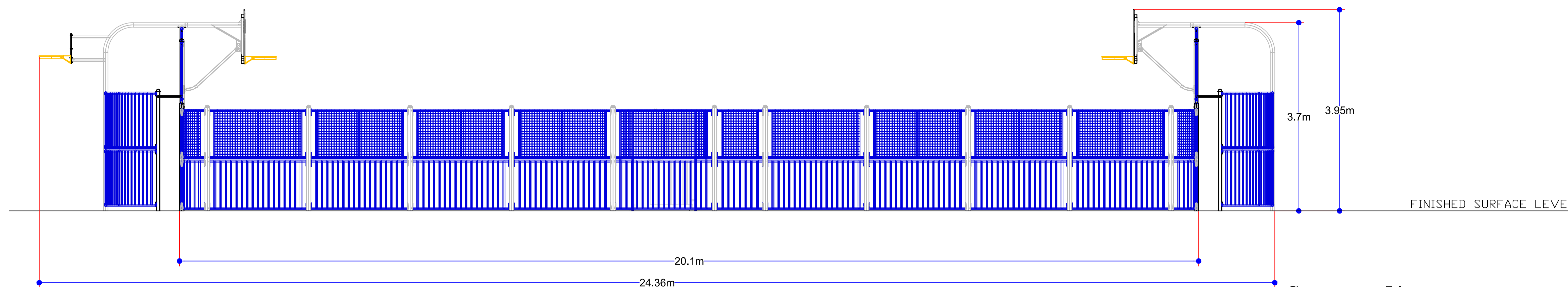
TITLE

ARENA SPORT SYSTEM
CHICAGO (SA-CH)

DATE 04/10/07	SCALE 1:50@A1
DRAWN BY : J.A.	CHECKED BY : J.C.

DRAWING No. 39563 ISSUE B

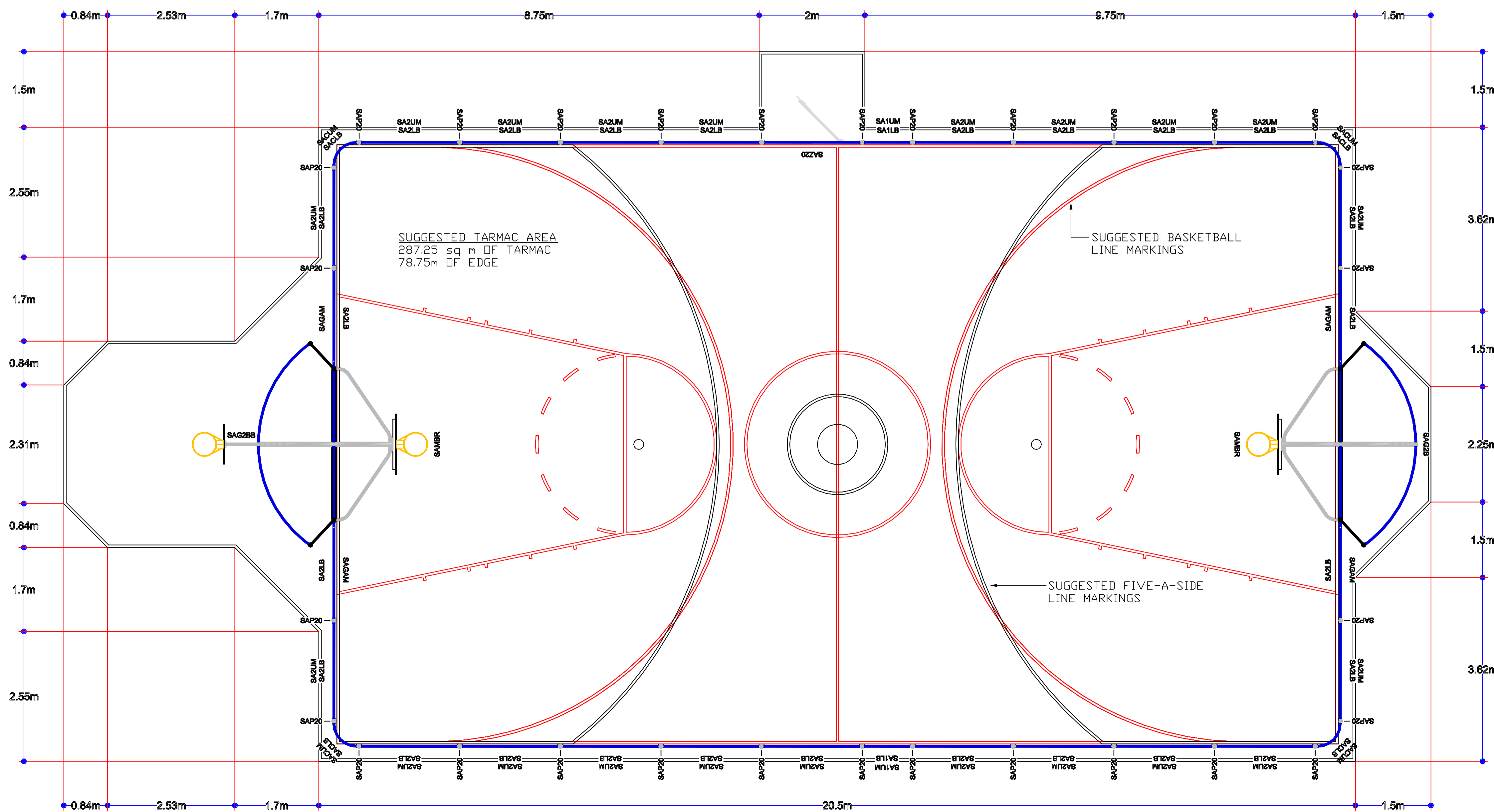
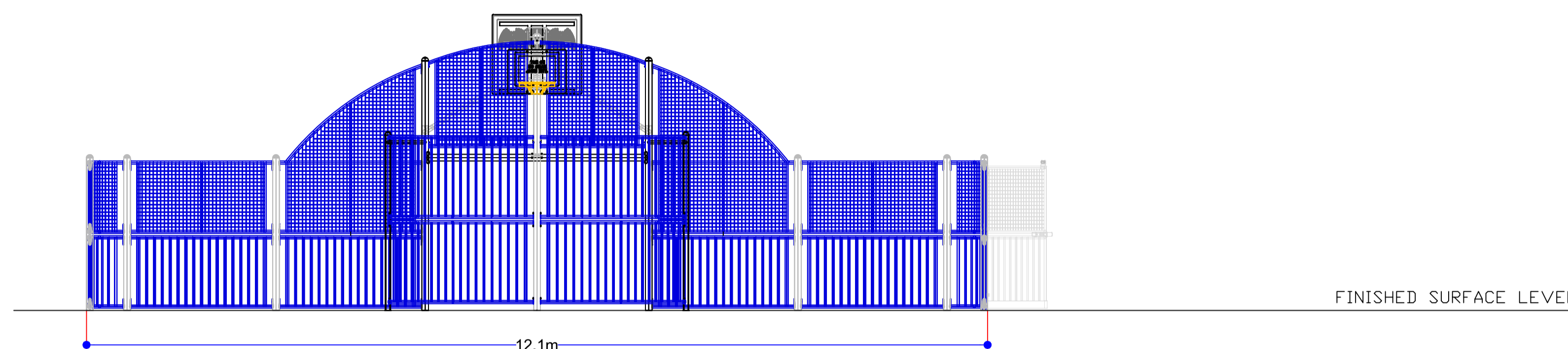
SHEET 1 OF 2



Components List
Arena Chicago (SA-CH)
Drawing No:39563A_Item2

Code	Description	Qty	Weight (kgs)	Extended Concrete
SA1LB	LOWER BAR FRAME 1M	2	47.20	0.00
SA1UM	UPPER MESH FRAME 1M	2	31.20	0.00
SA2LB	LOWER BAR FRAME 2M	25	990.00	0.00
SA2UM	UPPER MESH FRAME 2M	21	663.60	0.00
SACL	CURVED BAR FRAME	4	61.20	0.00
SACUM	CURVED MESH FRAME	4	53.20	0.00
SAG2B	GDAL SECTION	1	354.00	1.01
SAG2BB	GDAL + REVERSE PRCT BB	1	404.54	1.01
SAGAM	ARCH SIDE PANEL- MESH	4	188.80	0.00
SAMBR	1.2M REACH BOARD & HOOP	2	188.94	0.00
SAP20	2.0M HIGH POST	30	630.00	1.89
SAZ20	ZAUN 1.2m S/C GATE 2m HT	1	93.00	0.20
		97	3,705.68	4.11

REFER TO ARENA INSTALLATION INSTRUCTIONS FOR COMPONENT I.D. AND INSTALLATION





NOTES

REVISION

CUSTOMER

PROJECT

TITLE
 ARENA SPORT SYSTEM
 CHICAGO (SA-CH)

DATE	04/10/07	SCALE	N.T.S
DRAWN BY :	J.A.	CHECKED BY :	J.C.

DRAWING No. 39563 ISSUE B

© PLAYPOWER INC. 2010 SHEET 2 OF 2